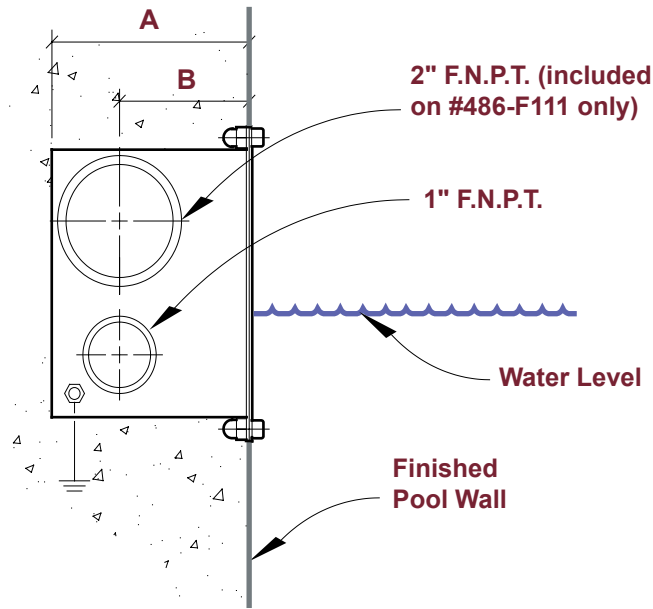


Function:

The **486 Stainless Steel Series Water Level Sensor** serves the same basic function as the 484 Series Sensors (see 484 Series Water Level Sensor Assembly for more details) but has additional features, the most obvious being its stainless steel construction and pleasing aesthetics.

We offer two types of the 486 Series Water Level Sensor: the #486-111 Water Level Sensor, and the #486-F111, which is a combination water level sensor and overflow designed for single level pools with less than 350 sq. ft. of surface area.



MODEL	A	B
All	4-3/8"	2-7/8"



Key Features:

- 16-gauge stainless steel, in-wall mounted enclosure with 1" FNPT conduit side connection and bonding stud.
- Probe assembly consists of a 1" MNPT PVC body, two stainless steel probes; and a brass nameplate/ common probe.
- Includes #18/3 Type SJTO PVC-jacketed cord, epoxy-sealed into the probe assembly.
- Requires our #487-3 monitor and solenoid-type fill valve.

486 Series

Level Control Sensor

#486-111A Water Level Sensor: Includes 50 feet of #18/3 Type SJTO PVC jacketed cord.

#486-111B Water Level Sensor: Includes 100 feet of #18/3 Type SJTO PVC jacketed cord.

#486-111C Water Level Sensor: Includes 150 feet of #18/3 Type SJTO PVC jacketed cord.

#486-F111A Water Level Sensor/Overflow: 50 feet of #18/3 Type SJTO PVC jacketed cord; 2" F.N.P.T. overflow drain side connection.

#486-F111B Water Level Sensor/Overflow: 100 feet of #18/3 Type SJTO PVC jacketed cord; 2" F.N.P.T. overflow drain side connection.

#486-F111C Water Level Sensor/Overflow: 150 feet of #18/3 Type SJTO PVC jacketed cord; 2" F.N.P.T. overflow drain side connection.

MODEL	ORDER #	DESCRIPTION	SHIP WEIGHT
486-111A	27700	Water level sensor with 50 feet #18/3 cord	7.0 lbs
486-111B	27701	Water level sensor with 100 feet #18/3 cord	10.0 lbs
486-111C	27702	Water level sensor with 150 feet #18/3 cord	13.0 lbs
486-F111A	27710	Water level sensor/overflow with 50 feet #18/3 cord	9.0 lbs
486-F111B	27711	Water level sensor/overflow with 100 feet #18/3 cord	12.0 lbs
486-F111C	27712	Water level sensor/overflow with 150 feet #18/3 cord	15.0 lbs
487-3	27576	Water Level Monitor (required for all 486 sensors)	2.0 lbs



Toll Free: 887.426.4622
 Phone: 770.457.3000
 Fax: 770.457.4225
 www.hobbsfountains.com