






600 Series Introduction	6-2	
600 Series Station Hatches	6-4	
630 Series 3-PAK Modular Pumping Station	6-5	
640 Series 4-PAK Modular Pumping Station	6-6	
660 - 610 Series 6, 8 and 10-PAK Modular Pumping Stations	6-7	

600 Series
Pump Stations



Toll Free: 887.426.4622
 Phone: 770.457.3000
 Fax: 770.457.4225
www.hobbsfountains.com



600 Series

Introduction

Function:

The 600 Series Modular Pump Stations are self-contained, pre-engineered underground pump vault systems designed for overall construction cost savings, as well as minimal maintenance upkeep.

Each 600 Series Modular Pump Station arrives at the jobsite assembled, tested, and ready to set in place for a quick “fast track” installation. The fountain mechanical and electrical support equipment is housed in a corrosion-proof, water resistant fiberglass vault. All internal components are preinstalled, prewired and prevalved, with leak-resistant penetrations through the exterior shell wall. Each penetration is labeled to correspond to the proper pipe or conduit that is to run to or from the vault, and as indicated in our complete installation drawing package.

The Modular Pump Stations dramatically reduce project costs by eliminating the need to construct an equipment room. Each vault can be conveniently located underground near the fountain resulting in cost savings on piping, wiring and labor. A 600 Series Pumping Station is also an economical alternative in applications where leasable space would be required for an equipment room.

600 Series Modular Pump Stations are available in five standard sizes: 3-PAK, 4-PAK, 6-PAK, 8-PAK, 10-PAK. Custom sizes are available to fit the requirements of the project.

Specifications:

Each 600 Series Modular Pump Station is designed and manufactured with the following standard equipment. Alternatives to the standard equipment can be provided to meet the project's requirements.

Filtration System - The filtration system utilizes a cartridge filter consisting of:

- Type 304 stainless steel canister with non-woven polyester cartridge element
- Automatic air relief
- Stainless steel lid with brass wing nuts for easy disassembly and cleaning
- 2" bottom-mounted inlet and outlet
- Electro-polished for resistance to corrosion
- Includes spare cartridge element; reducing down time during filter cleaning

Fill / Water Level Control Manifold - A fill / water level control manifold, with a nominal pipe size of 3/4", 1" or 1-1/2" depending on the size of the fountain, consisting of the following:

- Type 'K' copper construction
- 'Quick-fill' ball valve (bronze body)
- Backflow preventer: bronze body, Watts #007 double check valve style; four air relief valves (WATTS 009 or 090 type available upon request).
- Pressure reducing valve (bronze body with integral strainer and union connection inlet)

H₂O
PARTS
a wm. hobbs ltd. company

Toll Free: 887.426.4622
Phone: 770.457.3000
Fax: 770.457.4225
www.hobbsfountains.com



600 Series

Introduction (Cont.)

Fill / Water Level Control Manifold (continued):

- Pressure gauge (0 - 100 psi scale, steel body)
- 3/4", 120 volt, single phase, slow-closing 'make-up' solenoid valve (bronze body construction with NEMA 4 coil enclosure)
- Isolation gate valve (bronze body) on 3/4" and 1" versions, or 3/4" hose bibb (bronze body, for convenient water source) and 3/4" check valve on 1-1/2" versions

Sump Pump Assembly:

- Vortex impeller design
- Float operated, submersible (NEMA 6) mechanical switch with dark blue plastic housing
- U.L. listed 3-wire cord and plug
- Light blue epoxy-coated cast iron motor and pump housing
- Glass-filled impeller with metal insert
- Stainless steel screws and switch arm
- Water tight neoprene ring between motor and pump housing
- Automatic-reset, thermal overload protection
- 120 volt, 7.7 amp oil-filled motor, hermetically sealed
- Carbon and ceramic shaft seal
- PVC discharge piping assembly, 1-1/2" union/check valve (PVC body) and 1-1/2" NPT connection
- NOTE: Sump pump is optional in the 3-PAK

U.L. Listed Electrical Control Panel:

- NEMA 1 painted steel enclosure
- Main disconnect for power supply
- Panel board with circuit breakers
- Magnetic motor starter rated for the pump(s) selected
- H-O-A selector switches for the pump(s), vent fan and fountain lights
- 24-hour programmable time clock that is designed for two channel operation

Vent Fan System:

3-PAK and 4-PAK

- 4" PVC inlet fitting and 4" PVC outlet fitting with 106 CFM fan (120 volt, 0.20 amp, 3,000 RPM motor).

6-PAK

- 6" PVC inlet outlet fitting with 495 CFM fan (115 volt, 3.25 amp, 1570 RPM motor)

8-PAK and 10-PAK

- 6" PVC inlet outlet fitting with 495 CFM fan (115 volt, 3.25 amp, 1570 RPM motor)

H₂O
PARTS
a wm. hobbs ltd. company

Toll Free: 887.426.4622
Phone: 770.457.3000
Fax: 770.457.4225
www.hobbsfountains.com



600 Series

Station Hatches

Function:

The Modular Pump Stations are designed to conform to any setting, indoors and outdoors. This is done by providing an entry hatch that best suits your pump station's environment. There are three different type of hatches: the Landscape, the Diamond Plate, and the Tile-set Hatch. The hatches are premounted on the various pump stations.

The Landscape Hatch is used when the pump station is to be installed in a planter or other area with fill-dirt and landscaping adjacent to the hatch. The Diamond Plate and Tile-set hatches are used when the pump station is to be installed in an area which has a hard, formed-in-place floor (such as plain or tile-covered concrete) and requires a flush-mounted finish. All hatches are attached and sealed to the pump stations with stainless steel fasteners and clear silicon sealer.

Landscape Hatch: Single-leaf aluminum curb hatch is complete with counterflashing and 1" rigid insulation. Twelve inch (12") curb is formed with a 3-1/2" flange which is attached to the pump station. Metal cover is complete with 1" insulation covered by metal liner, neoprene draft seal, and inside handle. The hatch is assembled with Easy-Access spring hinges entirely contained within the hatch to prevent outside tampering. All hardware is equipped with automatic hold-open arm, complete with red vinyl grip handle, which provides easy one-hand release. A spring latch provides inside and outside operation.

Diamond Plate Hatch: Single-leaf, flush, gutter-type floor hatch has a 1/4" thick aluminum diamond plate cover reinforced to withstand a live load of 300 pounds per square foot. The frame is 1/4" formed aluminum with built-in 1-1/2" drainage coupling. Unless noted, all hardware is cadmium plated to resist corrosion. The hatch is equipped with an automatic hold-open arm and red vinyl release handle, stainless steel inside snap lock with removable outside wrench handle, heavy bronze hinges with stainless steel pins, and spiral lift springs. Note: all stainless steel hardware available upon request.

Tile-Set Hatch: Single-leaf, flush, gutter-type floor hatch has a 1/4" smooth aluminum cover with aluminum edging to receive 3/4" thick terrazzo or tile and setting bed, reinforced to withstand a live load of 300 pounds per square foot. The frame is 1/4" formed aluminum with built-in 1-1/2" drainage coupling. Unless noted, all hardware is cadmium plated to resist corrosion. The hatch is equipped with automatic hold-open arm and red vinyl release handle, stainless steel inside snap lock with removable outside wrench handle, heavy, bronze hinges with stainless steel pins, and spiral lift springs.

H₂O
PARTS
a wm. hobbs ltd. company

Toll Free: 887.426.4622
Phone: 770.457.3000
Fax: 770.457.4225
www.hobbsfountains.com



630 Series

3-PAK Modular Pumping Station

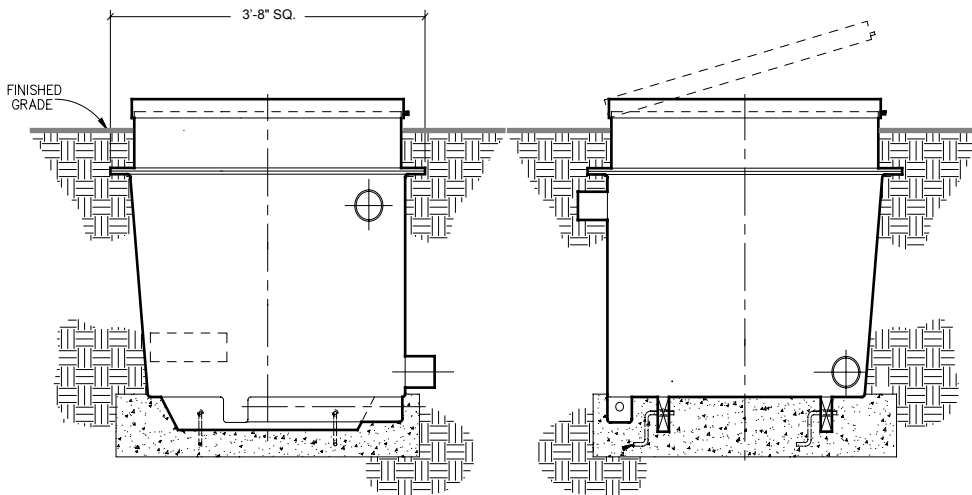
630-Series 3-PAK Modular Pump Station: Approximate size 3'-8" x 3'-2" x 3'-2"; Can utilize pumps between 1/3 HP and 3 HP.

Function:

3-PAK Modular Pump Station: Shell is a single-piece construction of 1/4" thick fiber reinforced plastic (FRP), with interior white gel-coat finish throughout. Formed integrally into the shell is a floor drain sump, which is normally drained via gravity through a 1-1/2" PVC line with backwater check valve, serviceable from the interior of the shell. As an option, a 120 volt, automatic sump pump (15 GPM) to remove any excess water can be substituted. Two skids are permanently bonded and sealed to the outside bottom of the shell, serving to provide rigidity and allow easy fork lift handling.

Ventilation is provided by a 106 CFM vent van assembly which operates in conjunction with two air ventilation fittings for air intake and exhaust. The access hatch has a 2'-6" x 3'-0" opening, with a variety of styles available (see '600-Series Hatches' for the type needed).

The pumping system has the capability of utilizing as small as a 1/3 horsepower centrifugal pump and as large as a 3 horsepower centrifugal pump. The 3 horsepower pump can produce a maximum of 150 gallons per minute at 50 feet of head.



The 630 3-Pak Pump Station is custom manufactured per the requirements for each fountain project. Contact our office for pricing and ordering information.

H₂O
PARTS
a wm. hobbs ltd. company

Toll Free: 887.426.4622
Phone: 770.457.3000
Fax: 770.457.4225
www.hobbsfountains.com



640 Series

4-PAK Modular Pumping Station

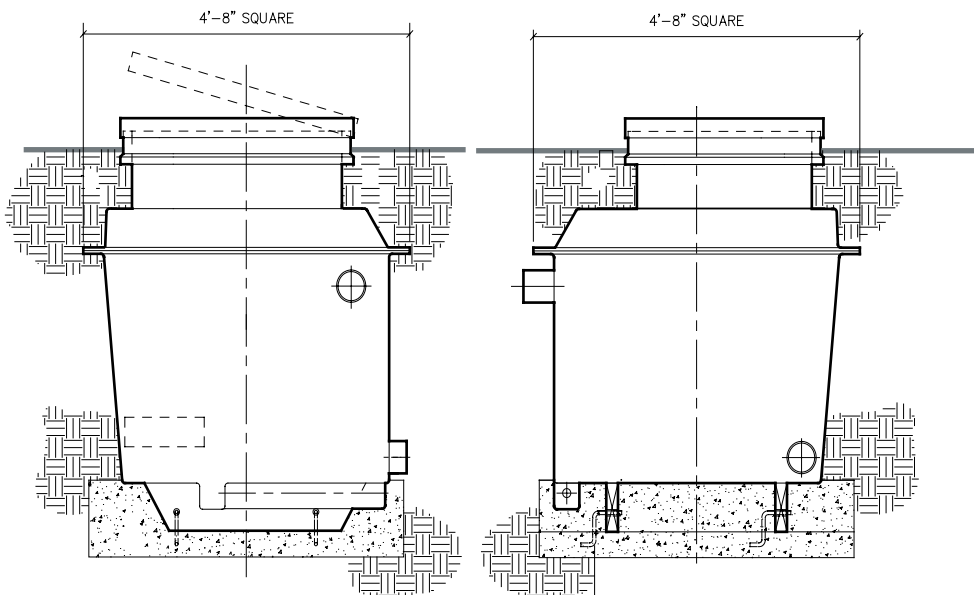
640-Series 4-PAK Modular Pump Station: Approximate size 4'-8" x 4'-8" x 5'-4"; Can utilize pumps between 1/3 HP and 7-1/2 HP.

Function:

4-PAK Modular Pump Station: Approximate size 4'-8" x 4'-8" x 5'-4". Shell is constructed in two parts, upper and lower, of 3/8" thick, fiber reinforced plastic (FRP), with interior white gel-coat finish throughout except for special gray gel-coat on the floor and step areas textured for added traction. Formed integrally into the shell is a corner step (for ease of entry) and a peripheral floor drain trough which feeds into a formed sump area. The sump area contains a simplex sump pump (120 volt, 15 GPM) assembly for forced draining of any excess water. Two skids are permanently bonded and sealed to the outside bottom of the shell, serving to provide rigidity and allow easy fork lift or lifting strap handling.

Ventilation is provided via a 106 CFM vent fan assembly which operates in conjunction with two air ventilation fittings for air intake and exhaust. The access hatch has a 2'-6" x 3'-0" opening, with a variety of styles available (see '600-Series Hatches' for the type needed).

The pumping system has the capability of utilizing as small as a 1/3 horsepower centrifugal pump and as large as a 7-1/2 horsepower centrifugal pump. The 7-1/2 horsepower pump can produce a maximum flow of 300 gallons per minute at 50 feet of head.



The 640 4-Pak Pump Station is custom manufactured per the requirements for each fountain project. Contact our office for pricing and ordering information.

H₂O
PARTS
a wm. hobbs ltd. company

Toll Free: 887.426.4622
Phone: 770.457.3000
Fax: 770.457.4225
www.hobbsfountains.com



660 - 610 Series

6, 8 and 10-PAK Modular Pumping Stations

**660-Series 6-PAK
Modular Pump Station:**
Approximate size 6'-0" x 6'-0" x 6'-0".

**680-Series 8-PAK
Modular Pump Station:**
Approximate size 6'-0" x 8'-0" x 6'-0".

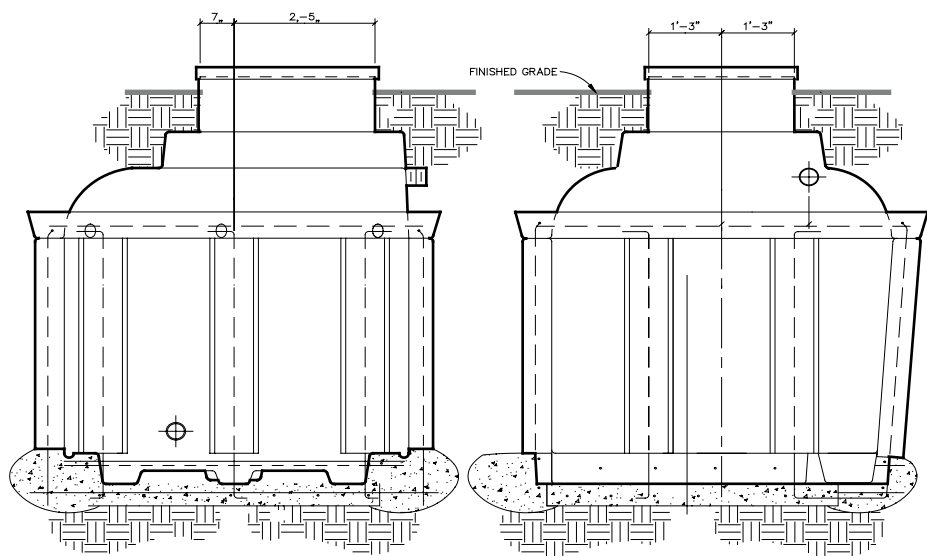
**610-Series 10-PAK
Modular Pump Station:**
Approximate size 6'-0" x 10'-0" x 6'-0".

Function:

6, 8, and 10-PAK Modular Pump Stations: Shell is constructed in two parts, upper and lower, of 1/4" thick, fiber reinforced plastic (FRP) with interior white gel-coat finish. Shell parts are bolted together with stainless steel fasteners and sealed with clear silicon sealer. The floor of the lower shell is formed with an integral, periphery drain trough which feeds into a formed sump of adequate size to accept the simplex sump pump (120 volt, 15 GPM) assembly. The main finished floor of the lower shell is constructed of poured concrete anchored with steel re-bars which penetrate the lower shell, forming a stable, high traction surface into which floor mounted equipment is securely anchored.

The shell walls include exterior, bonded-on, semi-circular FRP tubes which, when filled with rebar and poured concrete on jobsite, securely reinforce the shell structure. Two grooved areas are formed into the outside bottom of the lower shell part, facilitating fork lift or lifting strap handling. Access down into the vault is via a preinstalled fiberglass ladder. The access hatch has a 2'-6" x 3'-0" opening with a variety of styles available (see "600-Series Hatches" for the type needed). Ventilation is provided via a 495 CFM vent fan assembly which operates in conjunction with two air ventilation fittings for air intake and exhaust. Illumination inside the vault is provided by a U.L. listed, dust / moisture resistant, 120 volt, fluorescent-type light fixture; two 40 watt, rapid-start lamps are included.

The pumping system has the capability of housing a filtration pump and as large as two 50 horsepower centrifugal pumps.



Modular Pump Stations are custom manufactured per the requirements for each fountain project. Contact our office for pricing and ordering information.

H₂O
PARTS
a wm. hobbs ltd. company

Toll Free: 887.426.4622
Phone: 770.457.3000
Fax: 770.457.4225
www.hobbsfountains.com

