



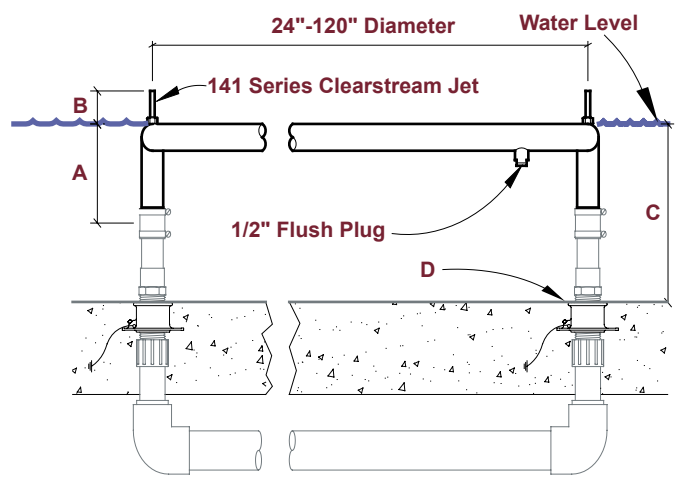
## 161 Series

### Spray Ring

#### Function:

The **161 Series Spray Rings** produce delicate, circular spray patterns. The adjustable jets provide the possibility for many different effects including a dome center drop, inside drop, outside drop, vertical, outside basket weave, and inside basket weave.

The idea of the Spray Ring can be taken a step further by creating custom configurations such as the Spray Bar. These can be manufactured to any desired angle or length, making the spray effect suitable for most applications. For further design consultation, please contact our office.



Size	A	B	C
All	6" MIN	2"	18" MAX

Recommended accessories shown in drawing: (D)  
276 Series Slab Penetration.

#### Key Features:

- Nine standard diameters: 24", 30", 36", 48", 60", 72", 96", 108", or 120". Custom rings available upon request.
- Standard rings use adjustable 1/8" orifice, 141 Series Clearstream Jets.
- High-quality copper construction. Brass or stainless steel available.
- Adjustable legs, 18" maximum water depth.
- Fine screening or 100% filtration required.
- **Water level independent.**



**#161-024 Spray Ring:** 24" OD; 1-1/2" tube construction; two 1-1/2" inlets; one 1/2" flush plug; thirty-eight jets at 3" on center.

**#161-030 Spray Ring:** 30" OD; 1-1/2" tube construction; two 1-1/2" inlets; one 1/2" flush plug; forty-two jets at 2-1/2" on center.

**#161-036 Spray Ring:** 36" OD; 2" tube construction; two 2" inlets; one 1/2" flush plug; forty-six jets at 2-1/2" on center.

**#161-048 Spray Ring:** 48" OD; 2" tube construction; two 2" inlets; two 1/2" flush plugs; fifty jets at 3" on center.

**#161-060 Spray Ring:** 60" OD; 2" tube construction; two 2" inlets; two 1/2" flush plugs; sixty-two jets at 3" on center.

**#161-072 Spray Ring:** 72" OD; 2" tube construction; two 2" inlets; two 1/2" flush plugs; seventy-six jets at 3" on center.

**#161-096 Spray Ring:** 96" OD; 2" tube construction; two 2" inlets; two 1/2" flush plugs; one hundred 0.12" jets at 3" on center.

**#161-108 Spray Ring:** 108" OD; 2" tube construction; four 2" inlets; four 1/2" flush plugs; one hundred and twelve jets at 3" on center.

**#161-120 Spray Ring:** 120" OD; 2" tube construction; four 2" inlets; four 1/2" flush plugs; one hundred twenty-four jets at 3" on center.

Model	Order # 200-	Dia.	# Jets	Flow Volume	Spray Height							Shipping Weight
					2'	3'	4'	5'	6'	8'	10'	
161-024	20266	24"	38	GPM	16	20	24	26	28	33	37	25.0 lbs
161-030	20267	30"	42		18	23	26	29	31	36	41	35.0 lbs
161-036	20268	36"	46		20	25	28	32	34	40	44	40.0 lbs
161-048	20269	48"	50		22	26	30	34	37	43	48	50.0 lbs
161-060	20270	60"	62		27	33	38	43	46	54	60	65.0 lbs
161-072	20271	72"	76		33	41	47	52	57	66	73	75.0 lbs
161-096	20272	96"	100		43	53	61	68	74	86	96	100.0 lbs
161-108	22022	108"	112		47	58	69	74	81	97	111	115.0 lbs
161-120	20273	120"	124		54	67	77	85	93	108	120	125.0 lbs
All Models					Head	14'	20'	27'	40'	54'	67'	81'

Toll Free: 887.426.4622  
Phone: 770.457.3000  
Fax: 770.457.4225  
www.hobbsfountains.com