



640 Series

4-PAK Modular Pumping Station

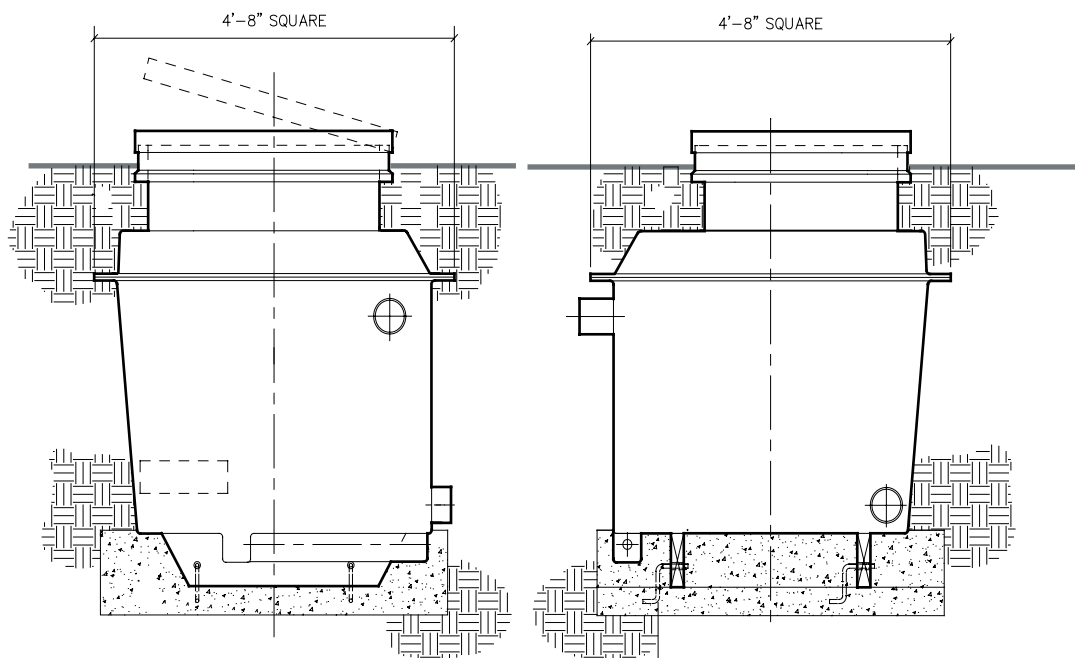
Function:

4-PAK Modular Pump Station: Approximate size 4'-8" x 4'-8" x 5'-4". Shell is constructed in two parts, upper and lower, of 3/8" thick, fiber reinforced plastic (FRP), with interior white gel-coat finish throughout except for special gray gel-coat on the floor and step areas textured for added traction. Formed integrally into the shell is a corner step (for ease of entry) and a peripheral floor drain trough which feeds into a formed sump area. The sump area contains a simplex sump pump (120 volt, 15 GPM) assembly for forced draining of any excess water. Two skids are permanently bonded and sealed to the outside bottom of the shell, serving to provide rigidity and allow easy fork lift or lifting strap handling.

Ventilation is provided via a 106 CFM vent fan assembly which operates in conjunction with two air ventilation fittings for air intake and exhaust. The access hatch has a 2'-6" x 3'-0" opening, with a variety of styles available (see '600-Series Hatches' for the type needed).

The pumping system has the capability of utilizing as small as a 1/3 horsepower centrifugal pump and as large as a 7-1/2 horsepower centrifugal pump. The 7-1/2 horsepower pump can produce a maximum flow of 300 gallons per minute at 50 feet of head.

640-Series 4-PAK Modular Pump Station: Approximate size 4'-8" x 4'-8" x 5'-4"; Can utilize pumps between 1/3 HP and 7-1/2 HP.



The 640 4-PAK Pump Station is custom manufactured per the requirements for each fountain project. Contact our office for pricing and ordering information.