



660 - 610 Series

6, 8 and 10-PAK Modular Pumping Stations

Function:

6, 8, and 10-PAK Modular Pump Stations: Shell is constructed in two parts, upper and lower, of 1/4" thick, fiber reinforced plastic (FRP) with interior white gel-coat finish. Shell parts are bolted together with stainless steel fasteners and sealed with clear silicon sealer. The floor of the lower shell is formed with an integral, periphery drain trough which feeds into a formed sump of adequate size to accept the simplex sump pump (120 volt, 15 GPM) assembly. The main finished floor of the lower shell is constructed of poured concrete anchored with steel re-bars which penetrate the lower shell, forming a stable, high traction surface into which floor mounted equipment is securely anchored.

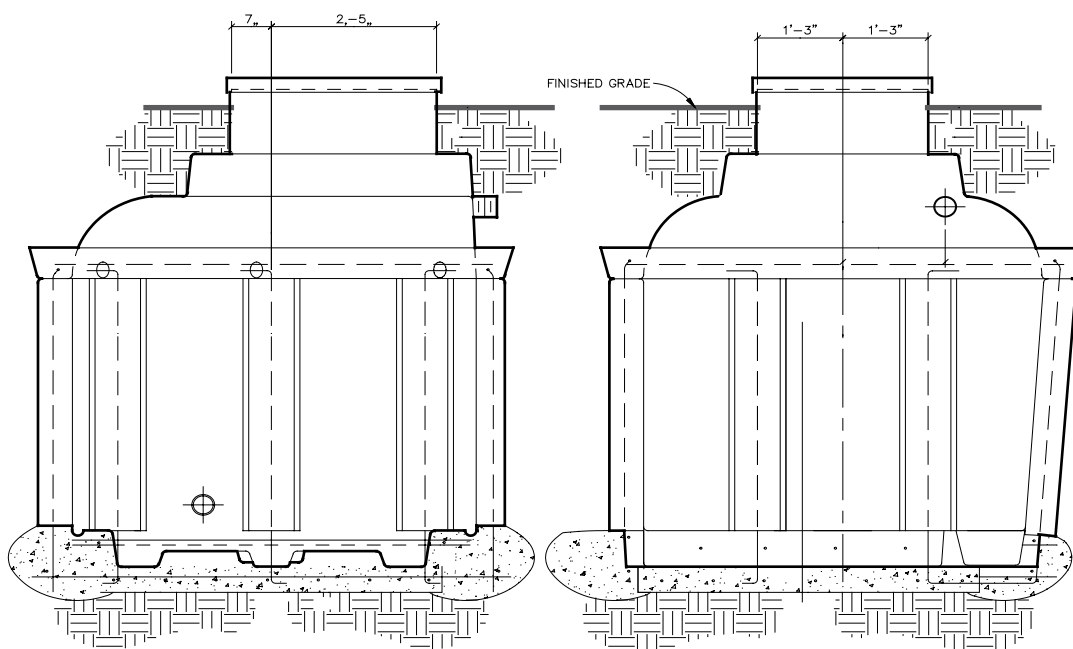
The shell walls include exterior, bonded-on, semi-circular FRP tubes which, when filled with rebars and poured concrete on jobsite, securely reinforce the shell structure. Two grooved areas are formed into the outside bottom of the lower shell part, facilitating fork lift or lifting strap handling. Access down into the vault is via a preinstalled fiberglass ladder. The access hatch has a 2'-6" x 3'-0" opening with a variety of styles available (see "600-Series Hatches" for the type needed). Ventilation is provided via a 495 CFM vent fan assembly which operates in conjunction with two air ventilation fittings for air intake and exhaust. Illumination inside the vault is provided by a U.L. listed, dust / moisture resistant, 120 volt, fluorescent-type light fixture; two 40 watt, rapid-start lamps are included.

The pumping system has the capability of housing a filtration pump and as large as two 50 horsepower centrifugal pumps.

**660-Series 6-PAK
Modular Pump Station:**
Approximate size 6'-0" x 6'-0" x 6'-0".

**680-Series 8-PAK
Modular Pump Station:**
Approximate size 6'-0" x 8'-0" x 6'-0".

**610-Series 10-PAK
Modular Pump Station:**
Approximate size 6'-0" x 10'-0" x 6'-0".



Modular Pump Stations are custom manufactured per the requirements for each fountain project. Contact our office for pricing and ordering information.

Toll Free: 887.426.4622
Phone: 770.457.3000
Fax: 770.457.4225
www.hobbsfountains.com