



630 Series

3-PAK Modular Pumping Station

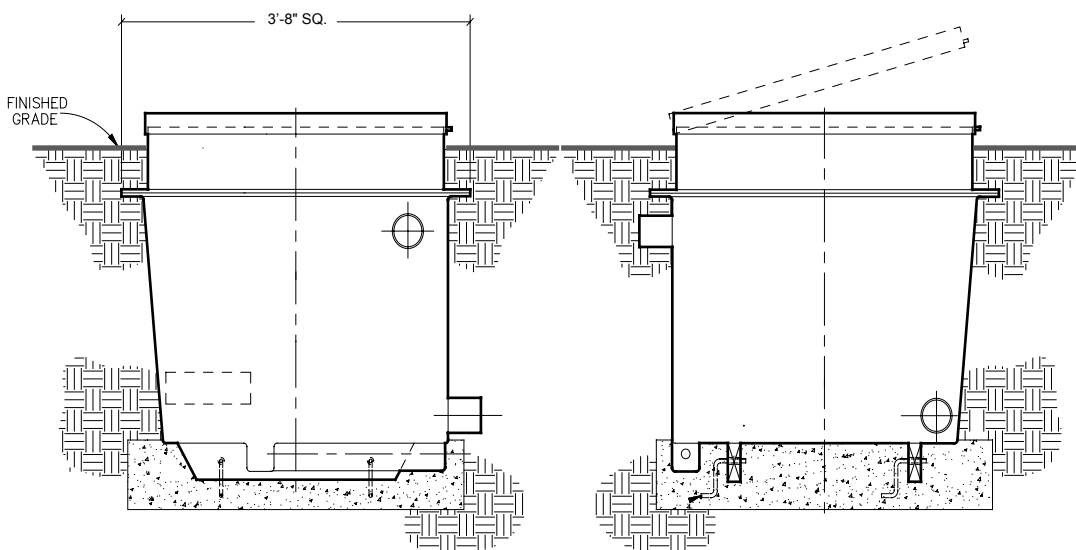
630-Series 3-PAK Modular Pump Station: Approximate size 3'-8" x 3'-2" x 3'-2"; Can utilize pumps between 1/3 HP and 3 HP.

Function:

3-PAK Modular Pump Station: Shell is a single-piece construction of 1/4" thick fiber reinforced plastic (FRP), with interior white gel-coat finish throughout. Formed integrally into the shell is a floor drain sump, which is normally drained via gravity through a 1-1/2" PVC line with backwater check valve, serviceable from the interior of the shell. As an option, a 120 volt, automatic sump pump (15 GPM) to remove any excess water can be substituted. Two skids are permanently bonded and sealed to the outside bottom of the shell, serving to provide rigidity and allow easy fork lift handling.

Ventilation is provided by a 106 CFM vent van assembly which operates in conjunction with two air ventilation fittings for air intake and exhaust. The access hatch has a 2'-6" x 3'-0" opening, with a variety of styles available (see '600-Series Hatches' for the type needed).

The pumping system has the capability of utilizing as small as a 1/3 horsepower centrifugal pump and as large as a 3 horsepower centrifugal pump. The 3 horsepower pump can produce a maximum of 150 gallons per minute at 50 feet of head.



The 630 3-PAK Pump Station is custom manufactured per the requirements for each fountain project. Contact our office for pricing and ordering information.