

261 Series

Vacuum Fitting

Function:

The **261 Series Vacuum Fitting** permits connection of a hose adapter, hose, and vacuum head to the filtering system to allow cleaning of the pool. The cleaning operation removes larger particles that have settled to the bottom of the pool.

Our #519-001 Maintenance Kit includes hose and vacuum accessories that work in conjunction with the 261 Series Vacuum Fitting.



Key Features:

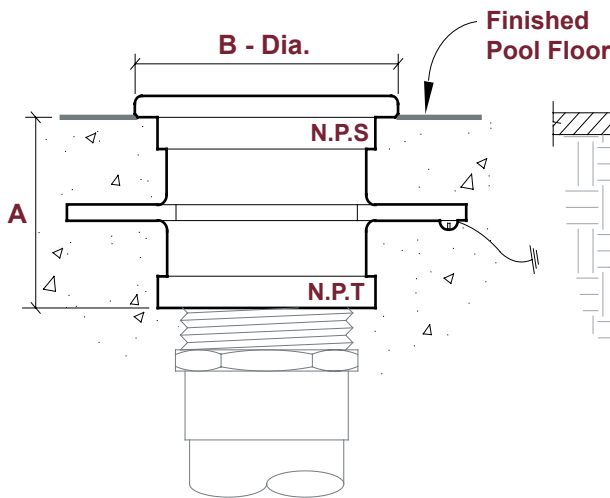
- Cast brass, female NPT connection body with integral waterstop and bonding screw.
- Available in polished brass or chrome-plated finishes.

#261-115 Vacuum Fitting:
For poured concrete pools. 2" male NPS x 1-1/2" female NPS flanged body; 1-1/2" removable plug; 2" NPT x NPS casting body.

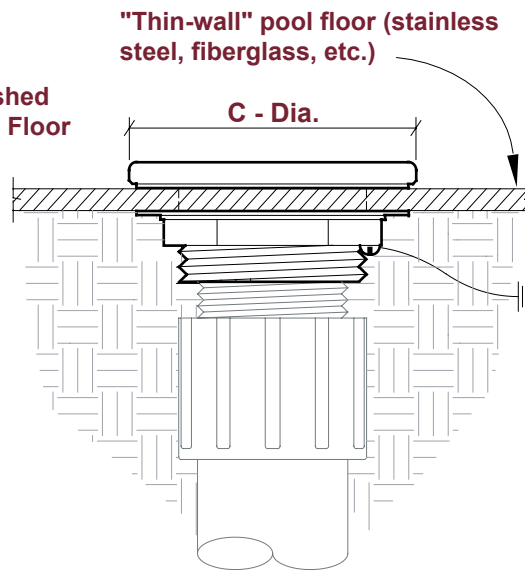
#261-215 Vacuum Fitting:
Same as #261-115, except with chrome-plated finish.

#261-315 Vacuum Fitting:
For thin-wall pools. 1-1/2" female NPS connection; 1-1/2" removable plug; 2" clamp ring and two neoprene gaskets.

#261-415 Vacuum Fitting:
Same as #261-315 except with chrome-plated finish.



#261-115 Vacuum Fitting. For poured concrete installations.



#261-315 Vacuum Fitting. For "thin-wall" installations.

Model	Order #	Description	A	B	C	Shipping Weight
261-115	240-24110	Vacuum fitting with 1-1/2" Plug.3"	2-1/4"	6"		6.0 lbs
261-215	240-24111	2" Chrome Fitting Vacuum Fitting with 1-1/2" Plug.	2-1/4"	6"		6.0 lbs
261-315	240-24112	1-1/2" Thin wall Brass Finish Vacuum Fitting with 1-1/2" Plug.			3-5/8"	3.0 lbs
261-415	240-24113	1-1/2" Thin Wall Chrome Finish Vacuum Fitting with 1-1/2" Plug.			3-5/8"	3.0 lbs
519-010	580-58110	Maintenance Kit				45.0 lbs

Toll Free: 887.426.4622
Phone: 770.457.3000
Fax: 770.457.4225
www.hobbsfountains.com